

# 911 INVESTIGATOR

Exposing the **EXPLOSIVE** WTC Evidence

AE911Truth.org

ARCHITECTS & ENGINEERS  
for 9/11 TRUTH

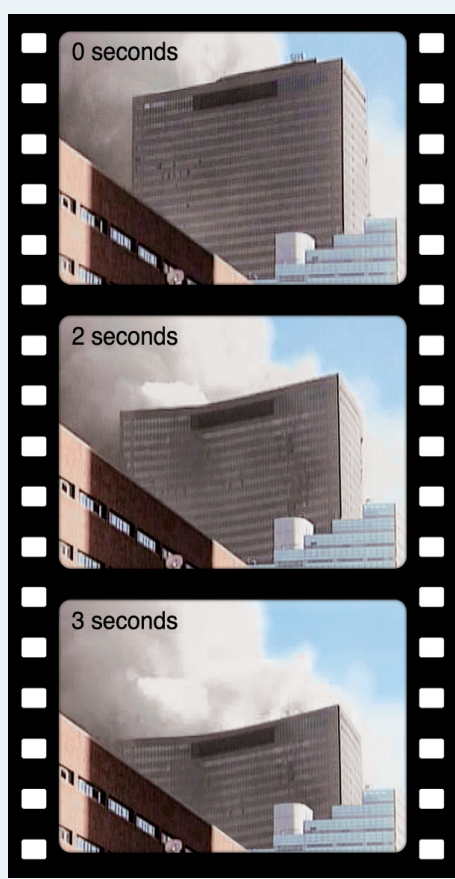
First Edition: v1.2

1500+ Architects & Engineers Investigate the Destruction of all 3 WTC Skyscrapers

50 Cents



AE911Truth lit up the NYC skyline at 9:11 pm on 9/11/10 with a third beam to shed light on the 3rd skyscraper destroyed on 9/11. WTC 7 may be the key to justice for those who lost their lives in the Twin Towers collapses



WTC Building 7 implodes at free-fall acceleration for 8 stories of its 6.5-second fall, baffling architects and engineers around the world who try to make sense out of the official "collapse by fire" explanation

## 1,500+ Architects & Engineers Challenge Official Report of WTC Destruction

By RICH CARAGOL, ARCHITECT

Welcome to Architects & Engineers for 9/11 Truth. We are a non-partisan association of more than 1,500 A/Es, with about 14,000 affiliates from all over the world. We are technical professionals representing more than 25,000 years of collective experience. We do not offer conspiracy theories. We do have serious questions about the official reports of the destruction of all three World Trade Center skyscrapers on 9/11. We are calling for a new independent investigation that includes all of the evidence that is missing from these building reports. We, along with other researchers and groups in the growing international 9/11 truth movement, have compiled critically important eyewitness testimony, photo, video, and scientific forensic evidence that has been ignored, falsified, or destroyed by individuals and agencies that were responsible to the public for a thorough transparent investigation.

Our website, AE911Truth.org, documents much of this important work. Our online store hosts several books, DVDs, technical papers, and other effective tools such as brochures, cards and vinyl banners, for use in educating the public.

AE911Truth was founded in March of 2006 when 24-year San Francisco Bay Area architect, Richard Gage, AIA, member of the American Institute of Architects, first heard the startling Bonnie Faulkner interview of a reluctant 9/11 researcher, David Ray Griffin, on KPFA radio, which launched Gage's own unyielding quest for the truth about the destruction of the WTC skyscrapers.

We have delivered this explosive story in more than 200 live presentations to audiences of 100 to 700 in 30 US cities and throughout 23 foreign countries and have given more than 200 radio interviews. By a show of hands, 85% of those unsure or accepting of prevailing opinion are convinced of the surprising evidence by our AE911Truth Presentations. And now we have the *911 Investigator* – the first edition of our broadsheet newspaper. We have placed the AE911Truth petition in the hands of every Congress member on Capitol

See ARCHITECTS p. 4

## Justice on the Horizon?

By DONALD E. STAHL

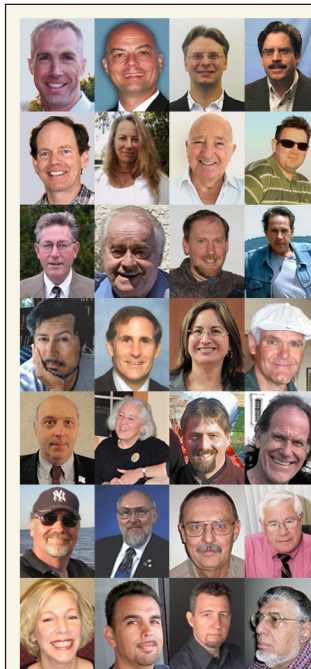
The 9/11 Truth movement has been wrestling for years over the challenge of how to obtain a real investigation that would analyze the evidence, such as brought forth by Architects & Engineers for 9/11 Truth and countless others, and follow it wherever it leads. Many, for instance, don't trust that the US Congress (which brought us the omissions and distortions of the *9/11 Commission Report*) would have the political will or the simple veracity to expose these incalculable misdeeds and trace them to their roots. Indeed perhaps most who are seeking justice believe that it will only be found in a venue outside of the United States.

One ray of hope inside the US might be a prominent initiative – Sen. Patrick Leahy's "Truth Commission" – though currently stalled. A special prosecutor could be appointed as was done to investigate President Nixon, but we know that that is not going to happen unless 9/11 Truth becomes much more familiar to the US public. The idea of universal jurisdiction is controversial but is gaining increasing acceptance. It dates back at least to the 1945 Nuremberg Trials. Citing the concept of universal jurisdiction, two Spanish judges indicted Augusto Pinochet and six Bush administration figures. One of those judges is currently at the International Criminal Court. There are efforts underway to contact him.

Many initiatives have been undertaken by the Accountability Movement concerning other alleged crimes in the Bush Administration but none involving the UN or International Criminal Court (ICC) so far. The International Criminal Court can only prosecute crimes committed on or after its founding date, July 1, 2002.

As of March 2010, 111 states are members

See JUSTICE p. 4



AE911Truth has more than 1500 technical professionals representing over 25,000 years of experience, who are calling for a new and independent investigation



Richard Gage, AIA, founder of Architects & Engineers for 9/11 Truth, presents the forensic evidence regarding the destruction of all three WTC skyscrapers

## Twin Towers Evidence Blows Away Fire Collapse Theory

By James Smith

The catastrophic destruction of the World Trade Center complex is said by government reports to have resulted from structural failure due mainly to fires initiated by the impacts of the airplanes. A closer look at the evidence reveals a much more disturbing crime.

Apart from the fact that no steel-framed high-rise building has ever collapsed due to fire prior to or since Sept. 11, the manner in which the buildings came down is itself a substantial cause for re-investigation. A collapse due to fire would likely proceed gradually with large deformations visible in the building's perimeter, with the building tipping over slowly in the direction of the steadily weakening structural members – to the path of least resistance.

Yet the Twin Towers both came down quite suddenly, without warning, and without any "jolts" that would indicate the upper mass impacting the lower mass. The smooth rate of descent was measured at 2/3 of free-fall. In other words, the building was accelerating (traveling faster and faster second by second) straight down through what should have been the path of greatest resistance – the 80,000 tons of structural steel below that was at least five times stronger than necessary to resist this load. Physicists and other experts agree that this could have happened only if the underlying supporting structures were removed ahead of the falling upper building mass. The National Institute of Standards and Technology (NIST) acknowledges that each building was destroyed in fewer than a dozen seconds, and that they "came down essentially in free-fall".

For the New York City firefighters on the scene, this rapid destruction without any notice was well beyond their prior experience. Sgt. James Canham, in the oral histories of 118 first responders, put it this way: "This changed all the rules. This went from a structure to a wafer in seconds - in seconds. I couldn't believe the speed of that tower coming down. I heard the rumble. I looked up. Debris was already 50 feet from the ground..."

More than a hundred first responders reported experiencing explosions and/or flashes of light as the destruction commenced.



WTC 2: South Tower's destruction exhibits features explainable only with the use of powerful explosives

Much of this evidence was also captured on video by multiple cameras. EMT Captain Karin Deshore, in a Nov. 7, 2001, *New York Times* interview, described the astonishing events like this: "Somewhere around the middle of the World Trade Center, there was this orange and red flash coming out. Initially it was just one flash. Then this flash just kept

See TWIN TOWERS p. 2



An excavating machine lifts debris dripping with molten metal

## High Temperatures, Persistent Heat & 'Molten Steel' at WTC Site Challenge Official Story

By Richard Gage, AIA & Andrea Dreger & Gregg Roberts

Extremely high temperatures were evident before and during the destruction of the World Trade Center Twin Towers and at Ground Zero. Seven minutes before the destruction of the South Tower, a flow of molten metal appeared, accompanied by several smaller flows, as documented by the National Institute of Standards and Technology (NIST). The material's glowing color showed that its temperature was close to "white hot" at the very beginning of the flow and "yellow-orange" further down. Iron-rich spheres in the WTC dust are additional proof of temperatures above the melting point of iron. Pyroclastic-like, rapidly expanding dust clouds after the destruction of the Towers can also be explained only by the expansion of hot gases.

The high-temperature phenomena at Ground Zero are documented by various sources:

Bechtel engineers, responsible for safety at Ground Zero, wrote in the *Journal of the American Society of Safety Engineers*: "The debris pile at Ground Zero was always tremendously hot. Thermal measurements taken by helicopter each day showed underground temperatures ranging from 400°F to more than 2,800°F."

The fact that high-temperature phenomena were an important issue at Ground Zero is underscored by the large number of thermal images acquired: images by SPOT, MTI, AVIRIS/NASA, "Twin Otter"/U.S. Army, and at least 25 images by EarthData, taken between Sept. 16 and Oct. 25. In addition, temperature measurements by helicopter were taken each day, and the firefighters used onsite sensors too.

Many witnesses, including rescue personnel and firefighters working on the piles, described the phenomenon of "molten steel." Terms used in witness statements are, for example, "molten steel," beams "dripping from molten steel," "molten steel ... like you're in a foundry. Like lava, from a volcano." A photograph taken on September 27 by a Ground Zero worker shows an excavating machine lifting debris from the WTC wreckage dripping yellow/orange molten metal.

WTC clean-up workers and 9/11 artifacts architect Bart Voorsanger, in the PBS video "Relics from the Rubble," described what must

See HIGH TEMPS p. 3

## Building 7 Implosion: The Smoking Gun of 9/11

By Richard Gage, AIA, Gregg Roberts, and David Chandler

Seven hours after the explosive destruction of the World Trade Center Twin Towers, a third high-rise building was demolished. It was not hit by an airplane. The characteristic signs of controlled demolition were everywhere.



47-story WTC 7 was 350 feet from the North Tower and sustained only minor damage from falling debris (deemed "insignificant" by NIST)

Although it received little media attention at the time, the third-worst structural building failure in modern history occurred on September 11, 2001. World Trade Center (WTC) Building 7 was a 47-story, steel-framed, fire-protected, high-rise office building located about a football field's length from the WTC North Tower. Unlike its two taller cousins, WTC 7 was never hit by an aircraft, yet it fell to the ground suddenly, displaying the classic signatures of explosive controlled demolition.

The evidence (discussed in this article) was ignored, mishandled, and/or covered up by the National Institute of Standards and Technology (NIST), the federal agency tasked with explaining its unprecedented destruction.

### A Mysterious Catastrophe

Although Building 7 was never hit by an airplane and had only isolated pockets of fires on about 10 floors, it suddenly imploded – coming down neatly, symmetrically, and completely at 5:20 p.m. The official story, according to NIST, is that WTC 7 collapsed due to "normal office fires" which created a "new phenomenon" in high-rise fires: destruction due to thermal expansion of steel beams, leading to the progressive collapse of nine floors. This ultimately caused the failure of column #79 – which was followed within seconds by all the rest.

Some observers had speculated that stores of diesel fuel inside the building might have produced exceptionally intense fires leading to the unusual collapse. However, NIST has officially acknowledged that diesel fuel was not involved. NIST also ultimately concluded that the impact of debris from the North Tower was not a significant contributor to the collapse, although it was blamed for starting the fires. What NIST's top engineers failed to explain – and often even to acknowledge – in their Final Report were the many features of the building's destruction that are normally seen only in explosive controlled demolitions.

### Evidence for Controlled Demolition

After an embarrassing series of questions from AE911Truth petition signers, NIST's top engineers ultimately acknowledged some of the key facts surrounding the building's destruction. However, NIST still refuses to seriously examine the hypothesis of explosive demolition, even though demolition is the only cause that has ever produced such structural failure and that exhibited the characteristics of Building 7's destruction. In fact WTC 7's failure was indistinguishable from a classic controlled implosion.

Let's consider the evidence:

See BUILDING 7 p. 2

### To Order reprints of the 911 INVESTIGATOR:

Visit the online store [AE911Truth.org](http://AE911Truth.org)  
50 copies - \$20, 100 - \$30, 200 - \$50,  
1000 - \$200 plus s&h

Online version with links to reference material:  
[AE911Truth.org/911Investigator](http://AE911Truth.org/911Investigator)

Published by:  
Architects & Engineers for 9/11 Truth  
2342 Shattuck Ave., Suite 189  
Berkeley, CA 94704  
Phone: (510) 292-4710

First Edition v1.2 includes updates and corrections

# Building 7 Implosion

(continued from page 1)

## Speed of Collapse

As documented by video footage, Building 7 collapsed at free-fall acceleration for a distance of more than 100 feet – equal to at least eight stories.

NIST initially denied Building 7's free-fall in its Draft Report released in August 2008. In the technical briefing that followed, NIST's lead investigator, Dr. Shyam Sunder accurately explained, "A free-fall time would be an object that has no structural components below it." He inaccurately claimed that WTC 7 took 40 percent longer than "free-fall time" to collapse, "and that is not at all unusual because there was structural resistance that was provided in this particular case. And you had a sequence of structural failures that had to take place, and everything was not instantaneous."

However, physics instructor David Chandler had used the existing network television videos to carefully measure and document the acceleration of the building during its fall. His published analysis had shown conclusively that a significant period of free-fall was an indisputable fact. He publicly challenged NIST's claims at the technical briefing. Along with several others, he filed formal requests for corrections during the public-response period.

Having been cornered, NIST reversed its initial denial of free-fall in its Final Report. However, it couched its revised position in deceptive language, and failed to explain how free-fall could be compatible with its

## NIST Withheld Evidence

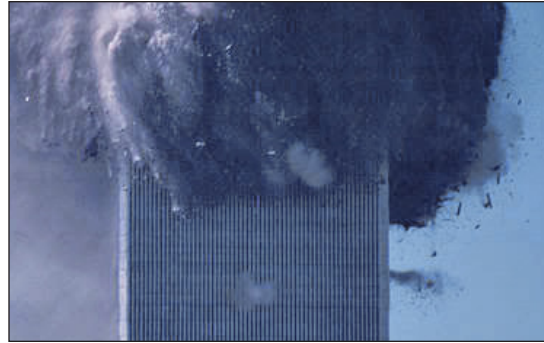
NIST officials have not provided even a superficially coherent explanation of the collapse. Nor have they taken all of the relevant evidence into account. What then is the missing evidence?

## Thermite Incendiaries

Prior to the NIST investigation, the Federal Emergency Management Agency (FEMA), had conducted a preliminary, cursory, underfunded investigation and produced a Building Performance Assessment Report. In Appendix C of that report, FEMA described its analysis of only two steel samples, one from Building 7 and the other from Tower 1 or 2. The analysis of the WTC 7 sample showed "evidence of a severe high temperature corrosion attack on the steel, including rapid oxidation and sulfidation with subsequent intergranular melting..."

"A liquid eutectic mixture containing primarily iron, oxygen, and sulfur formed during this hot corrosion attack on the steel..." "No clear explanation for the source of the sulfur has been identified." The *New York Times* called this "perhaps the deepest mystery uncovered in the investigation." What did NIST say in its Final Report about this mystery described by FEMA? Nothing – there was no mention of this crucial evidence at all. It was excluded.

Neither jet fuel nor office fires can reach anywhere close to steel's melting point, much less its evaporation point, even



High-speed ejections well below the zone of destruction provide additional evidence of explosives

# Twin Towers Evidence Blows Away Fire Theory

(continued from page 1)

popping all the way around the building and that building had started to explode. The popping sound - and with each popping sound it was initially an orange and then a red flash came out of the building and then it would just go all around the building on both sides as far as I could see. These popping sounds and the explosions were getting bigger, going both up and down and then all around the building." There are many similar accounts in this astonishing series of oral recordings effected by NYC Fire Commissioner, Thomas Von Essen,

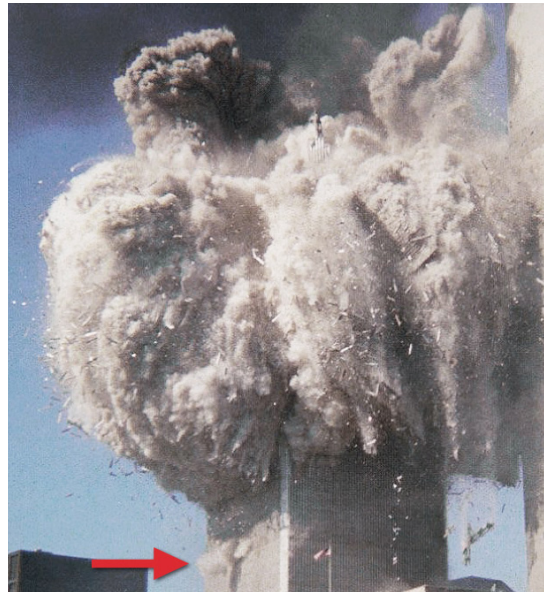
"Initially it was just one flash. Then this flash just kept popping all the way around the building and that building had started to explode."

Karin Deshore, in a Nov. 7, 2001, *New York Times* interview

but kept hidden by the city of New York until it was ordered by a federal appeals court to release them to the *New York Times*.

Also captured on video and still photos were isolated explosive jets of material expelled from the sides of the structure 20-60 stories below the so-called "crush zone". These precisely mimic what are known as "squibs" in the controlled demolition industry. Normally such charges are used to cut structural steel members so that the structure is able to fall with little to no resistance. The stack of 110 four inch thick concrete floors in both towers, each an acre in size, are missing from the rubble pile where photos reveal only a two-story pile of metal debris. A gravitational collapse should have left a pile of floors about 20 stories tall.

As the WTC skyscrapers disintegrated before the eyes of stunned observers, steel framing sections



Multiple isolated ejections up to 60 stories below the "crush zone" can be seen exploding horizontally

weighing nine tons were hurled up to 600 feet away. This required an explosive force capable of ejecting these perimeter wall units at up to 70 mph as if shot out of a cannon. Some 90,000 tons of concrete and metal decking were pulverized, creating pyroclastic-like flows (hot gases with suspended solids) similar to those observed and filmed during the explosion of the Mt. St. Helens volcano.

When the clouds of dust settled, what was left were remarkably symmetrical 1,400 foot diameter debris fields consisting mainly of completely dismembered structural steel framing. Although the media often repeats that the Twin Towers' concrete floors came down like a series of stacked pancakes, there were in fact no pancaked floors to be found in the photos or videos of the debris piles. "There's no concrete... it was pulverized," gasped Gov. Pataki at his first visit to the site.

The mass media and government officials continue to exclude this topic from public conversation. We encourage you to join us in speaking out.

For further documentation and analysis of the evidence at the destruction of the World Trade Center see the DVD "9/11: Blueprint for Truth – The Architecture of Destruction" available at AE911Truth.org.

# The World Trade Center Dust



The World Trade Center dust is remarkable due not only to its having blanketed Lower Manhattan 4" to 12" thick in many places, but also for the secrets that it would reveal.

# Billions of Previously Molten Iron Spheres in WTC Dust Reveal Use of Thermite Materials

By JAMES SMITH & ANDREA DREGER

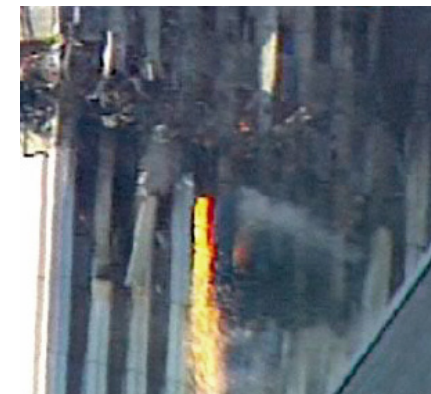
The World Trade Center dust is remarkable due not only to its having blanketed Lower Manhattan 4" to 12" thick in many places, but also for the dark secrets that it would reveal.

Iron-rich microspheres were so common in the WTC dust that EPA's WTC panel discussed their use as one of the signature components to distinguish the WTC dust from so-called "background" dust (i.e. common office-building dust).

RJ Lee Group, evaluating the contamination of the Deutsche Bank building at 130 Liberty Street, also described these iron-rich spheres, and actually used them as one of their signature markers. In other words, dust wasn't regarded as WTC dust unless it contained these spheres. The chemical composition and micro-images of two WTC iron-rich spheres were documented by the US Geological Survey.

The fraction of microspheres in the dust varied (between 0.2 and 1.3 % for USGS outdoor samples and a mean of 5.87% for all RJ Lee samples) depending on the area where the samples were taken. Due to their shape and density, the spheres were not likely to have traveled as far as other components of the dust. The diameter of the spheres in

destruction – temperatures exceeding the melting point of iron (~2,700° F). The spheres must have been molten when they were created in order to take their spherical shape. Such high temperatures could not have been produced by jet fuel or office building fires, which reach only up to 1,800 °F under the most severe fire conditions. However, the

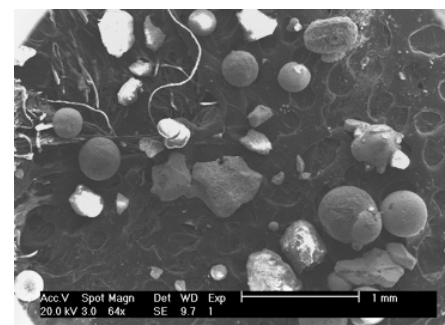


Molten metal started to pour from the side of the WTC South Tower – 7 minutes prior to its destruction

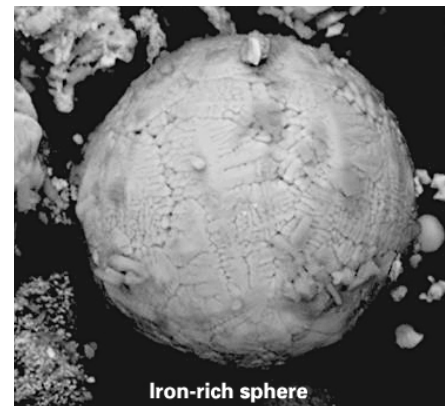
thermite reaction produces molten iron and aluminum oxide as the reaction products. After being ejected into the atmosphere, molten iron droplets would be pulled into roughly spherical shapes by surface tension. They would then cool, solidify, and fall out – preserving in their spherical shape the information that they were once molten, and preserving in their chemical signature information about their origin.

This, along with the chemical makeup of the spheres, was first discussed by physicist Steven Jones and other scientists in two articles published in 2007 and 2008. The chemical signature of several of the spheres shows significant amounts of aluminum, thus matching the signature of the thermite residue but not that of steel. Some of these spheres also contain sulfur but no calcium. So the origin of the sulfur cannot be gypsum (from the buildings' wallboard). Thermite, a special thermite mixture developed by the military, contains sulfur. The chemical signature of many of the WTC dust spheres also "strikingly" matches that of the spheres and spheroids found in the residue of ignited red/gray nanothermite composite chips.

Surely a new investigation is called for that takes into account the minimum 2800° F heat source necessary to create billions of molten iron droplets. Join AE911Truth and the burgeoning 9/11 Truth movement in our pursuit of real answers and accountability from governmental officials who were tasked with explaining the destruction of the WTC towers.



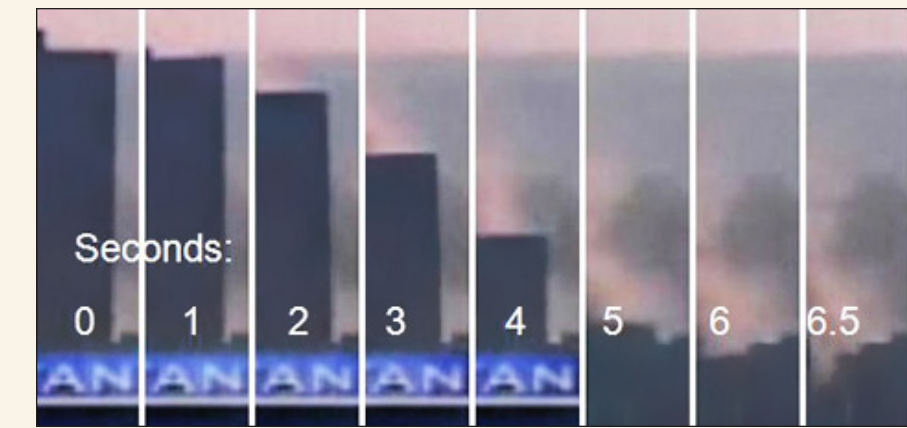
SEM (Scanning Electron Microscope) image of WTC dust shows large quantities of iron-rich microspheres



Iron-rich sphere

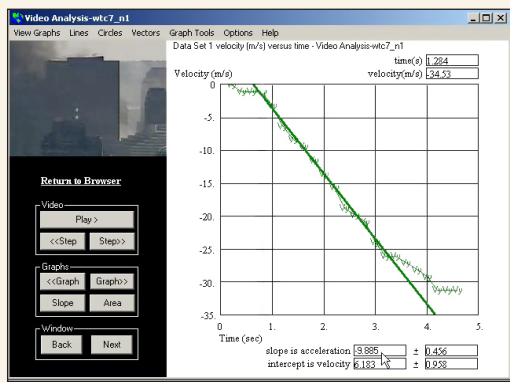
two evaluated dust samples ranged from about one micron (0.001 mm) to 1.5 mm.

The microspheres must have been formed at extremely high temperatures during the World Trade Center's



On 9/11 WTC 7 free-falls through 40,000 tons of structural steel designed 5x stronger than necessary – in just 6.5 seconds

fire-induced progressive-collapse theory. For the observed straight-down collapse to happen, an immense network of heavy steel columns and beams would have had to be forcibly removed and more than 400 structural-steel connections would have had to fail every second, evenly, all across each of the eight floors involved. These failures had to occur ahead of the collapsing section – and could not be caused by it – because a free-falling object cannot exert force on anything in its path without slowing its own fall.



WTC 7: In freefall for eight stories. The graph shows the velocity increasing each second which is acceleration

Yet NIST's admission of the fact of free-fall, together with Sunder's previous acknowledgment of the simple meaning of that fact, led to no reconsideration of its fire-induced, single-column-initiated, progressive-collapse hypothesis. Moreover, in what looks like an attempt to bury the discussion, its change of stance on the question of free-fall was omitted from the list of changes accompanying its Final Report.

## Symmetry of Collapse

The overall building mass fell suddenly, uniformly, and nearly symmetrical through what should have been the path of greatest resistance – some 40,000 tons of structural steel. According to structural engineer Kamal Obeid, PE, this requires a precisely-timed, patterned removal of critical steel columns – which office fires, a gradual chaotic, organic process, simply cannot achieve.

Only a carefully engineered series of explosions (or incendiaries) could cause a steel-framed skyscraper to collapse in on itself – and land mostly within its own footprint. After all, demolition companies are paid large sums to accomplish this extremely difficult feat, and only a few can do it with tall buildings. Also, the destruction was complete. This building had been built especially strong so that alternate floors could have been removed in case a tenant needed a two or even three story open space. Yet, its forty-seven stories collapsed, in fewer than seven seconds, to about four stories of debris – having fallen like a house of cards – with the almost complete dismemberment of both the braced frame and welded moment-resisting (bend-resistant) frames. Again, this is something fire could not have, and has never, achieved.

if those critical temperatures had been lowered by the presence of free sulfur. So what could have caused this "high temperature corrosion attack?"

Thermite is a mixture of powdered iron oxide and elemental aluminum which, when ignited, reacts violently at 4,000-4,500° Fahrenheit (F) – well above the melting point of steel or iron, about 2,800° F, producing aluminum oxide and molten iron. When free sulfur is added to the mixture, the iron melts at a lower temperature. Thermite with sulfur added is called thermate. Structural steel in contact with ignited thermate also melts at a lower temperature. Contrary to what NIST and others have claimed, the sulfur could not have come from gypsum wallboard, where it is an inert, chemically "locked" ingredient.

## Extreme Hot Spots

The United States Geological Survey (USGS) used NASA thermal imaging of the WTC rubble pile surface to document hot spots with extreme temperatures of almost 1,400° F. These temperatures are hotter than most office fires produce, and there were no fires on the surface of the WTC 7 pile following the collapses. The detected surface temperatures indicate much higher temperatures deeper within the pile. These extreme temperatures persisted for several weeks, despite the continuous spraying of millions of gallons of water onto the debris pile – so much water that one worker described the result as "a giant lake." Thermite contains its own source of oxygen and burns just as well under water.

## Summary

The collapse of WTC Building 7 represents one of the worst structural failures in modern history. The official story contends that fires weakened the structures, resulting in a gravitational collapse. The evidence, obvious to so many researchers but omitted from NIST's Final Report, supports a very different conclusion – one that points squarely to explosive controlled demolition.

If WTC 7 was intentionally brought down, then clearly it becomes a 'smoking gun' that must be investigated. Who were the terrorists that had access to this highly secure building, occupied in part by the CIA, FBI, Dept. of Defense, IRS, SEC, and others, and the technology required to prepare it for demolition? The 1,500 strong Architects & Engineers for 9/11 Truth present the scientific forensic data, evidence, and eyewitness and video testimony. We do not speculate as to who might have been responsible or how they have, so far, gotten away with the crime of the century.

The destruction of the Twin Towers must be re-evaluated as well in light of the WTC 7 evidence. We therefore call for an unimpeachable investigation with subpoena power into the destruction of all three WTC skyscrapers. We ask you to do your part as a citizen to join us in making it happen.

# Nullifying Newton:

## Official Story Violates Laws of Physics

### High School Physics Teacher Corrects NIST

By DICK SCAR, BSAE

The National Institute of Standards and Technology (NIST) maintained in its August 2008 Final Draft Report, and the associated technical briefing, that WTC Building 7 took 40% longer to collapse than if it had been in freefall.

NIST Project Leader Shyam Sunder explained that WTC 7 could not have come down in free-fall, because there was resistance to the fall provided by the steel structure underneath. But a determined high school physics teacher in central California, David Chandler, demonstrated that NIST was using fraudulently manipulated data to try to show a slower rate of collapse.

## WTC Building 7 in Free-fall

NIST, when confronted publicly with evidence produced by Chandler, finally admitted in its November 2008 Final Report that WTC 7 fell for 2.25 seconds in free-fall, but they brushed off this newly acknowledged fact as being "consistent with the results of the global collapse analysis," despite Sunder's earlier statement. Thus, the NIST simulation and analysis represented a multi-million-dollar effort to avoid explaining what really happened.

Many other physics analyses are presented by Chandler on his website 911SpeakOut.org, applying the laws of



Physics teacher David Chandler forced NIST to admit WTC 7 experienced over two seconds of free-fall

physics to WTC 7 and the Twin Towers. For a more detailed account of the unexplained features of the destruction



Instead of being analyzed to determine the cause of failure, most of the WTC steel was rapidly shipped off to China for recycling

## Evidence Destroyed is Justice Denied

By DICK SCAR, BSAE

The destruction of the three World Trade Center skyscrapers on 9/11 caused the greatest loss of life and property damage in U.S. fire history and constituted the largest structural failures in world history. This event should have received the most thorough investigation of any event in history.

Even with ordinary house fires evidence is collected and an investigation is performed in order to determine the cause, especially if foul play is suspected. But the WTC investigations performed by the National Institute of Standards and Technology (NIST) were at best incomplete and at worst criminally fraudulent. FEMA cleanup workers and NIST engineers alike completely ignored the most obviously relevant and applicable recommendations of the National Fire Protection Association, NFPA 921, the nationally accepted guideline for fire and explosion investigation.

### Wholesale Destruction of Forensic Evidence

The 9/11 disaster scene in Manhattan, dubbed "Ground Zero," should have been treated as a crime scene in accordance with 9/11's immediate appellation "the Crime of the Century," in greater measure than



400 truck loads of steel per day were removed from the WTC site

simply as the scene of a terrorist attack that would immediately be labeled an "act of war." Certainly material and debris, where injured people might be trapped, had to be removed as quickly as practical. But, as important evidence, it should have been taken to a secure site for further investigation. NFPA 921 states:

"Once evidence has been removed from the scene, it should be maintained and not be destroyed or altered until others who have a reasonable interest in the matter have been notified." Moreover, after there was no reasonable hope of finding any more victims alive, there was no longer any need for the headlong rush to dispose of the steel.

As the NIST report admitted, the three WTC skyscrapers whose destruction was blamed primarily on fire were the only cases of modern steel-framed high-rise buildings in world history to have ever completely collapsed because of fire. The structural steel was therefore extremely important evidence. Yet this evidence was quickly hauled away by up to 400 trucks per day and taken ... where? Not to a secure place to await inspection, but to barges where it was readied for shipping.

Instead of being analyzed to determine the cause of failure, the WTC steel framing pieces were rapidly shipped off to India and China for recycling. New York Mayor Rudi Giuliani, a former prosecutor, surely knew the importance of securing evidence – and that the law in fact requires it. Yet, of the 200,000 tons of structural steel contained in the Twin Towers, only a few hundred pieces were saved. And, only one piece of steel framing said to have come from WTC 7 was saved.

According to Erik Lawyer, founder of Firefighters for 9/11 Truth, officials in charge of the scene admitted that "the majority of the evidence was destroyed." Building fire expert and editor-in-chief of *Fire Engineering Magazine* Bill Manning wrote, "Such destruction of evidence shows the astounding ignorance of government officials to the value of a thorough, scientific investigation...I have combed through our national standard for fire investigation, NFPA 921, but nowhere in it does one find an exemption allowing the destruction of evidence. To treat the September 11 incident any differently would be the

height of stupidity and ignorance... The destruction and removal of evidence must stop immediately."

### Explosive Evidence Ignored

NIST ignored clear evidence of explosives and incendiaries in the destruction of all three high-rises. NIST excluded anything that happened after the so-called point of collapse initiation from the Twin Towers investigation despite that one of their stated "objectives" was to determine "how WTC 1 and WTC 2 collapsed."

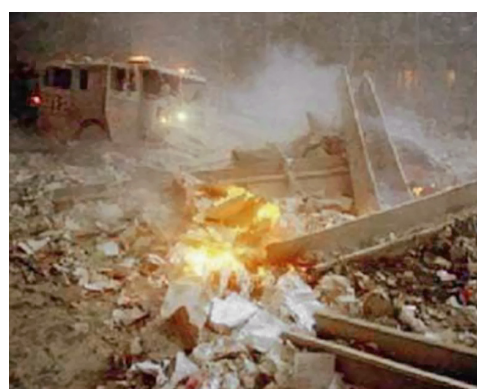
Hundreds of first responders and others on the scene reported hearing explosions – yet NIST ignored them. More than 100 of these reports were recorded by orders of Fire Commissioner Thomas Von Essen in October of 2001, but the City of New York withheld this key evidence until forced by the New York State Court of Appeals to release it in August 2005.

NFPA 921 calls for the consideration of the possibility of exotic accelerants or explosives when "pulverized concrete", "high order damage", and "lateral ejection of building elements" are found. Pulverized concrete covered all of lower Manhattan and comprised up to 30% of the WTC dust. The Twin Towers were completely destroyed down to their individual structural elements, and ejected as far as 600 feet.

NFPA 921 states that accelerants should be investigated in any fire crime scene and that molten steel may indicate the use of thermite, an incendiary and accelerant. Yet NIST did not look for thermite. Since then, however, independent scientists have found a high-tech version of thermite, known as nanothermite, in dust samples collected from the WTC site. Previously molten iron micro-spheres had already been found in the WTC dust by USGS researchers and environmental engineers, further indicating high temperatures associated with the use of thermite.

### Molten Metal and High-Temperature Phenomena Ignored

More than two dozen eyewitnesses have reported seeing molten steel in the basements of all three WTC high-rises. This is confirmed by photos and verified by infrared satellite images indicating extremely high temperatures. Yet John Gross, Lead Engineer for NIST, denies



Molten metal witnessed by dozens of people was completely omitted from NIST report

even having heard any reports of molten metal at Ground Zero.

NIST stated in 2007 on its website to have the "vision to lead the world in methods of measurement and prediction of the behavior of fire and its effects." Conspicuously, NIST never has shown any interest in investigating the unusual, allegedly fire-related, high temperature phenomena in the WTC collapse piles.

### A Cover-up?

It is clear that the actions by NYC/Port Authority officials, FEMA managers, and NIST engineers relative to the collection, preservation, and analysis of the evidence of this monumental crime looks more like a cover-up than an investigation. AE911Truth is dedicated to obtaining a real investigation that properly accounts for all the evidence and which uses the scientific method to analyze it. Join us in this historic pursuit of justice.

# Advanced Pyrotechnic or Explosive Material Discovered in WTC Dust

By GREGG ROBERTS & ANDREA DREGER

Starting in 2007, a group of independent researchers began examining the ubiquitous "dust" (powder actually) from the World Trade Center disaster to see if identifiable residues might help explain the highly energetic destruction that was observed in the videos. Naked-eye and microscopic examination revealed numerous tiny metallic and magnetically attracted spheres and red/gray chips, quite distinctive in the dust samples.

The existence of iron-rich microspheres in the WTC dust was documented by government agencies in 2004 and 2005. But nothing yet had been published about the red/gray chips in the dust until Steven Jones first described them in 2007. What might have been misinterpreted as the residue of common paint when seen with the naked eye proved to be a highly energetic advanced nano-composite material.

In April 2009, a team of scientists that included physicist Steven Jones (formerly BYU), chemist Niels Harrit (University of Copenhagen, Denmark), physicist Jeffrey Farrer (BYU), and six other authors published their findings regarding the red/gray chips in the peer-reviewed paper "Active Thermite Material Discovered in Dust from the 9/11 World Trade Center Catastrophe," *The Open Chemical Physics Journal*, 2009, 2, 7-31, available online. Red/gray chips from four different WTC dust samples were examined using scanning electron microscopy, X-ray energy dispersive spectroscopy (XEDS), and differential scanning calorimetry. The main findings of the study are as follows:

The material in the red layer consists of intimately mixed particles of iron oxide and aluminum embedded in a carbon-rich matrix. The particles range in size from tens to hundreds of nanometers. Elemental aluminum was present in thin plate-like structures, while iron oxide was present as faceted grains, roughly 100 nm across – about a thousand times smaller than a human hair.

Iron oxide and aluminum are the ingredients of classic thermite, an incendiary that burns unusually hot at approximately 4500°F, producing aluminum oxide and molten iron. The carbon content of the matrix indicates the presence of an organic substance.

When the red/gray chips were heated to about 430° C (806° F), they ignited, releasing relatively large amounts of energy very fast. This behavior matches "fairly closely an independent observation on a known super-thermite sample", as reported in a paper published by researchers associated with Lawrence Livermore National Laboratories. The residue of the ignited red/gray chips included iron-rich spheres, "indicating that a very high temperature reaction had occurred, since the iron-rich product clearly must have been molten to form these shapes." The chemical signature of the spheres and spheroids "strikingly matches the chemical signature of the spheroids produced by igniting commercial thermite, and also matches the signatures of many of the microspheres found in the WTC dust."

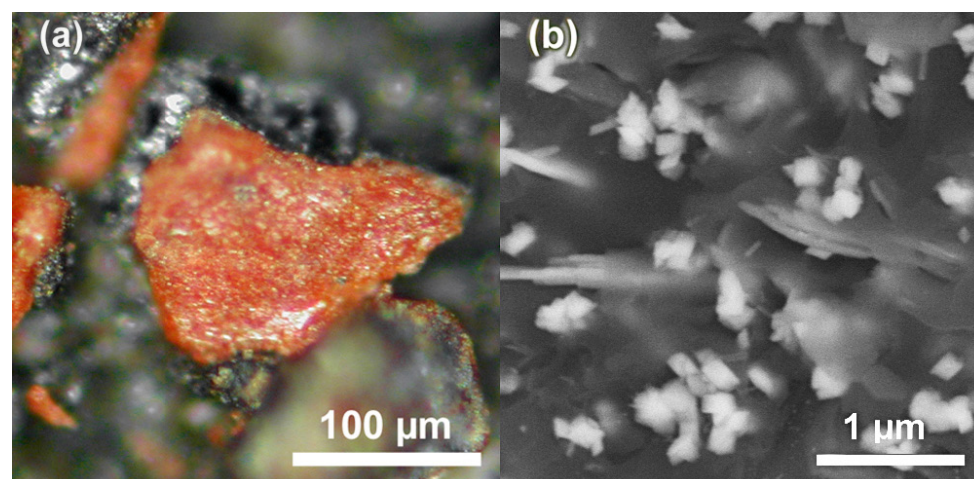
The scientists concluded that the red layer of the red/gray chips "is active, unreacted thermite material, incorporating nanotechnology," and that it "is a highly energetic pyrotechnic or explosive material." See the published study for the remainder of the fascinating findings.

Energetic nanothermitic compounds have been researched since the 1990s. One "advantage" of nanothermites as stated in the literature is their ability to enhance the destructive effect of high explosives; the high rate of reaction in nanothermites allows the main explosive charge to release its energy even faster when nanothermite is used as an igniter. Such igniters also do not leave behind lead containing residues as lead azide igniters do. Nanothermitic composite materials have been extensively researched by US national labs. The energy release of these special materials can be tailored for various applications, they can be designed to be explosive by adding gas-releasing compounds (such as those found in the matrix of the WTC chips' red layer) and they have potential for easy storage and safe handling.

As of 2002, the production process at the Naval Surface Warfare Center for ultra fine grain (UFG) aluminum, alone, required several pieces of high-tech equipment. The article states: "The current state of UFG aluminum production is that this is an area that still requires considerable effort" (*AMPTIAC Quarterly*, Special Issue, "DOD Researchers Provide A Look Inside Nanotechnology," 2002).

Red/gray chips, with a red layer that comprises ultra fine grain aluminum platelets intimately mixed with faceted grains of nanosized iron oxide, embedded in a carbon-rich matrix, cannot have been widely available in 2001. Niels Harrit, lead author of the study, stated "These new findings confirm and extend the earlier finding of previously molten, iron-rich microspheres in the World Trade Center dust. They provide strong forensic evidence that the official explanation of the WTC's destruction is wrong."

Given the explosive nature of the destruction of the WTC Twin Towers along with the finding of this high-tech nanocomposite pyrotechnic or explosive material in the WTC dust samples, there exists strong evidence which should compel all who are aware to be active in supporting AE911Truth in our effort to obtain a real investigation.



Highly energetic red/gray chip discovered in the WTC dust at optical magnification (a) and 50,000X electron microscope magnification (b). The latter image shows consistently sized iron oxide particles approximately 100 nm across and 40 nm-thick wafers of aluminum embedded in a carbon-rich matrix

### What is Thermite?

Thermites are a class of compounds used for various purposes like welding, extraction of metals from ores, or, by the military, as an incendiary capable of damaging tanks and other equipment. The most common form of thermite is based on aluminum powder and iron oxide; the term "thermite" is therefore often used as a synonym for the aluminum/iron oxide thermite mixture.

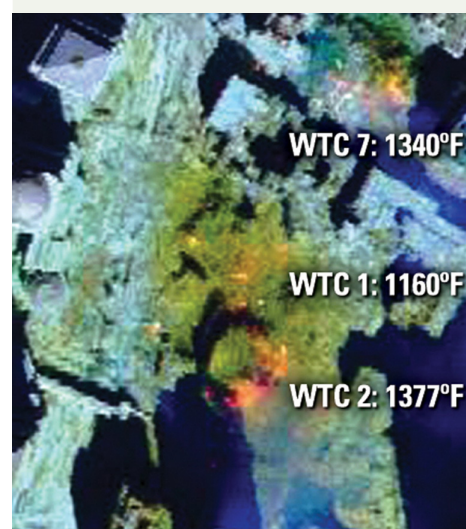
Thermite reactions are highly exothermic – i.e. they release relatively large amounts of energy. The common aluminum/iron oxide thermite mixture reacts into aluminum oxide, which is present in a whitish aerosol/"smoke", and iron, present as molten iron at temperatures of up to 4,500° F.

### High Temperatures, Persistent Heat and 'Molten Steel' at WTC Site

continued from page 1

have been several tons of "fused element[s] of steel ... molten steel and concrete and all of these things ...all fused by the heat," weighing several tons each. These foreign objects came to be known as "meteorites."

The heat at Ground Zero was not only extreme, it was also persistent, as proven not only by witness statements and a photograph by LiRo Group/Engineering of orange-red glowing steel as late as October 21, but also by thermal images taken by NASA and EarthData



Sept 16, 2001 thermal images reveal 1,400°F temperatures at the surface of the WTC 1, 2 & 7 debris piles — yet there were no fires at the surface after the collapses. These surface temperatures indicate much higher temperatures below the surface

satellites. The EarthData thermal images also show that the "hot spots" remained at the same locations. The phenomenon did not "move" across the site, like one would expect from fire as it consumes the fuel available in any one location.

University of California professor Abolhassan Astaneh-Asl, the first structural engineer given access to the WTC steel at Fresh Kills Landfill notes, "I saw melting of girders at the World Trade Center." Astaneh also "describes the connections [between supporting columns] as being smoothly warped: 'If you remember the Salvador Dali paintings with the clocks that are kind of melted – it's kind of like that. That could only happen if you get steel yellow hot or white hot – perhaps around 2,000 degrees.'"

Iron workers at the site pointed out that huge columns that were bent into horseshoe shapes - without the flanges showing any cracks or buckling. They cited, "It takes thousands of degrees to bend steel like this."

FEMA documents in their Appendix C of its May 2002 WTC Building Performance Assessment Team study, for sample 1, "evidence of a severe high temperature corrosion attack on the steel, including oxidation and sulfidation with subsequent intergranular melting." A "sulfur-rich liquid" containing "primarily iron, oxygen, and sulfur" "penetrated" into the steel.

The extremely high temperatures contradict the official story. Office and hydrocarbon fires burning in open air (~500° to 1,500° F) cannot reach temperatures in the range that iron or structural steel melts (2,700° F). This was even acknowledged by NIST's Co-Project Leader, John Gross, in the same public talk where he stated regarding the phenomena of molten steel, "I know of absolutely nobody, no eyewitnesses that said so, nobody that's produced it." Yet there is abundant proof of the molten metal, which subsequent tests reveal to be iron, in the debris piles. Furthermore, NIST itself performed extensive fire tests to establish the temperatures reached by the WTC office fires. The temperatures established are far

below the temperatures required to produce all of the above phenomena – which occurred both before and during the destruction and at Ground Zero.

The steel problem was "solved" by NIST by excluding most of the steel from being systematically examined for failure modes and heat excursions. The steel collected by the Port Authority, which has been stored in Hangar 17 at JFK Airport, was not included in the investigation except for 12 pieces. Of the 236 pieces that NIST possessed, many were excluded based on the circular argument that only columns from impact and fire floors were of interest in the investigation. Thus, NIST avoided having to discuss 51 of its 55 core columns. Sample 1 from FEMA's Appendix C was also excluded.

In addition, NIST developed a new method of "visual examination" that it then substituted in place of the systematically used tool. NIST's "paint cracking" method has the following "advantages": paint cracks can be produced not only by high temperature excursions, but also by "corrosion"/ "environmental degradation" and by plastic deformation; many columns had no paint left for examination. Moreover, by relying on a method that requires microscopic examination, NIST was able to ignore pieces that were obviously heat-affected but had come from non-fire floors. A contractor's report that employed common visual examination was "reviewed": NIST contrasted the contractor's results with their newly developed method and their fire exposure observations, and by employing again a circular argument. NIST's steel "examination" shows that its "working hypothesis" was in fact its premise, and that NIST had gone to great lengths to maintain this premise.

Some want to cite "natural thermite reactions" for the high-temperature phenomena: airplane aluminum must have reacted with rust. This possibility can be ruled out based on the findings of a study that was conducted in 2002 at the Colorado School of Mines for the Minerals Management Service. Officially, the study, whose lead author is a close research associate of T. W. Siewert of NIST, is about thermite-sparking in offshore environments. But due to a very odd study



FEMA's May 2002 report documents evidence of a severe high temperature corrosion attack on the steel

design the question about the feasibility of natural thermite reactions in the WTC is answered too. The authors established the ignition temperatures for rust, dehydrated rust and iron-oxide-based thermite reactions. The necessary temperatures are so high that one can conclude that thermite reactions between airplane aluminum and rust (some rust was on beams according to documents), dehydrated rust (rust dehydrates in fire) or iron oxide (iron oxide was part of the primary paint) were not feasible in the WTC. Also tested was what happens when aluminum impacts rust at very high velocity, so, interestingly, even the possibility that the impacting airplanes caused natural thermite reactions can be ruled out.

The overwhelming evidence of these extremely high temperatures, which normal office fires and jet fuel cannot produce, cries out for a new investigation. The hypothesis of explosive controlled demolition must be examined and, if confirmed, followed wherever it leads, so that Americans can know for sure what was the real cause of the catastrophic loss of life at the WTC on 9/11 and the identities of everyone who was responsible for it.

